

# F600A



**evolution**  
CONCEPT

english

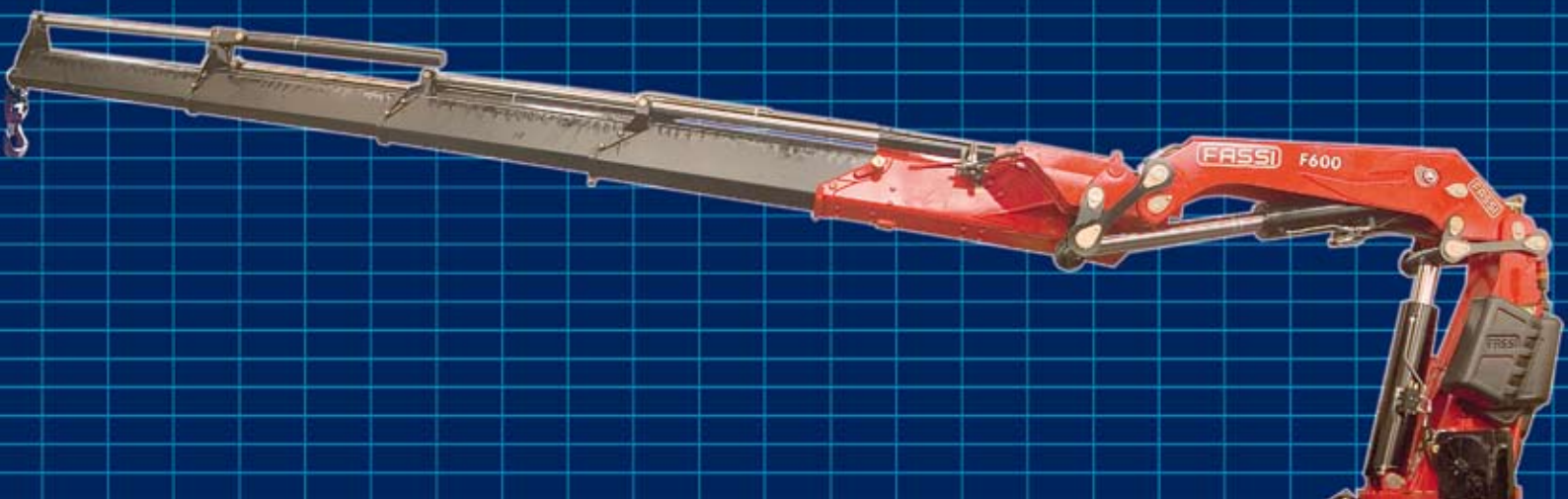
italiano

français

deutsch

español

nederlands



c r a n e s   w i t h o u t   c o m p r o m i s e

**FASSI**

CRANES WITHOUT COMPROMISE

F600A



## EVOLUTION SYSTEM

**GB** Evolution is the "TOP" range that includes the most advanced solutions in the field of cranes for trucks. At the heart of the system there are the electronic Evolution systems: the control unit, digital distributor, remote control, ADC combined by means of a CANBUS transmission protocol, and co-ordinated by the comprehensive management system IMC (Integral Machine Control). These systems, together with the excellent synergy between the double linkage system rods and the ProLink function, result in an exceptional crane performance in terms of speed and power, with the highest levels of safety. Control unit FX800 - Hydraulic distributor D900 - Command unit RCH/RCS - Dynamics control ADC

Design according to European Regulation EN12999\*. Fatigue-tested in class H1B3.

**IT** Evolution è la gamma "TOP" che ingloba le soluzioni più avanzate nel settore delle gru per autocarro. Cuore dell'apparato sono i sistemi elettronici Evolution: unità di controllo, distributore digitale, radiocomando, ADC in combinazione tra di loro tramite protocollo di trasmissione CANBUS e coordinati dal sistema di gestione integrale IMC (Integral Machine Control). Questi sistemi, abbinati alla ottimale sinergia tra il doppio biellismo e la funzione ProLink consentono di ottenere dalla gru eccezionali prestazioni di velocità e potenza nella massima condizione di sicurezza. Unità di controllo FX800 - Distributore idraulico D900 - Unità di comando RCH/RCS - Controllo della dinamica ADC

Progettazione conforme alla Normativa Europea EN12999\*. Classe di collaudo a fatica H1B3.

**FR** « Evolution » est la gamme "High Tech" englobant les solutions les plus avancées dans le secteur des grues pour camion. Le point vital du concept est constitué des systèmes électroniques « Evolution »: unité de contrôle, distributeur numérique, radiocommande, ADC se combinant grâce à un protocole d'émission CANBUS et sont coordonnés par le système de commande intégrale IMC (Integral Machine Control). Ces systèmes, en association avec l'excellente synergie existante entre la double biellette et la fonction ProLink permettent d'obtenir de la grue des performances de vitesse tout à fait exceptionnelles et une grande puissance dans des conditions de sécurité maximale. Unité de contrôle FX800 - Distributeur hydraulique D900 - Unité de commande RCH/RCS - Contrôle de la dynamique ADC

Etude de projet conforme à la norme européenne EN12999\*. Essais en fatigue en classe H1B3.

**ES** Evolution es la gama "TOP" que reúne las soluciones más avanzadas en el sector de las grúas para camión. La base de la gama son los sistemas electrónicos Evolution: unidad de control, distribuidor digital, radiocontrol, sistema ADC combinados entre ellos mediante el protocolo de transmisión CANBUS y coordinados por el sistema de gestión integral IMC (Integral Machine Control). Estos sistemas, combinados con la óptima sinergia entre el sistema de doble biela y la función ProLink, permiten obtener de la grúa excepcionales prestaciones de velocidad y potencia en las máximas condiciones de seguridad. Unidad de control FX800 - Distribuidor hidráulico D900 - Unidad de control RCH/RCS - Control de la dinámica ADC

Proyecto según Normativa Europea EN12999\*. Comprobación de fatiga en la clase H1B3.

**DE** Evolution ist die Top-Produktreihe, die die fortgeschrittensten Lösungen im Bereich LKW-Ladegrane in sich vereint. Herz der Gruppe sind die elektronischen Evolution Systeme: Kontrolleinheit, digitaler Steuerblock, Funkfernsteuerung, Bewegungskontrolle ADC, untereinander durch CANBUS-Übertragungsprotokoll verbunden und durch das Hauptverwaltungssystem IMC (Integral Machine Control) koordiniert. Diese Systeme, verbunden mit einer optimalen Synergie zwischen doppeltem Kniehebelsystem und der ProLink-Funktion, ermöglichen außergewöhnliche Geschwindigkeits- und Kraftleistungen des Krans bei maximaler Sicherheit. Kontrolleinheit FX800 - Digitaler Steuerblock D900 - Funkfernsteuerung RCH/RCS - Bewegungskontrolle ADC

Berechnungsnorm EN12999\*. Ermüdungstest nach Klasse H1B3.

**NL** Evolutie is de topreeks, welke de meest vooruitstrevende oplossingen omvat in de autolaadkraan-sector. In de kern van het apparaat zijn er de elektronische Evolutie systemen: de controle-eenheid, het digitaal aangestuurde ventielblok, radiografische afstandsbesturing, ADC, welke via het transmissieprotocol CANBUS op elkaar zijn aangesloten en die door het integrale beheersysteem IMC (Integrale Machine Controle) gecoördineerd worden. Deze systemen en de optimale synergie tussen de dubbele kniehevelsystemen en de ProLink - functie resulteert in een exceptionele kraanprestaties voor wat betreft de snelheid en het hefvermogen betreft, met de hoogste veiligheidsniveaus. Controle-eenheid FX800 - Hydraulisch ventielblok D900 - Besturingseenheid RCH/RCS - Controle van de dynamica ADC

Het ontwerp van de kraan komt overeen me de Europese Norm EN12999\*. Vermoeidheidscontrole in de klasse H1B3.

\*For EC markets - Per mercati CE - Pour les marchés CE - Para los mercados CE - Für CE Märkte - Voor EG markten

# F600A

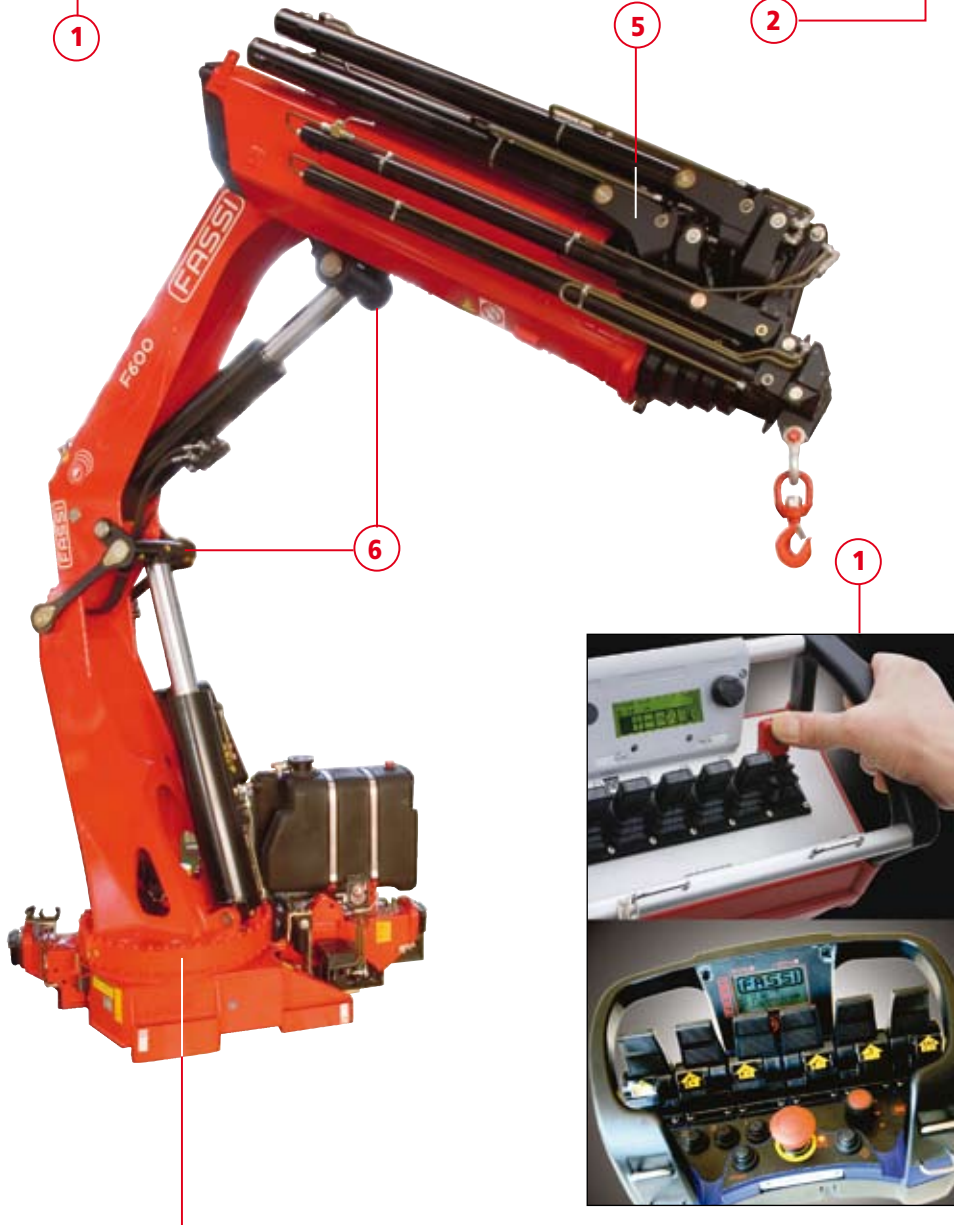


1



2

5



6

1



- GB**
- 1) D900 "Flow sharing" Digital hydraulic distributor and RCH/RCS Evolution remote control
  - 2) FX800 electronic control system
  - 3) Continuous rotation on a slew ring with with motoreducer
  - 4) Recycling and XF valves
  - 5) MPES system
  - 6) Linkages
  - 7) ProLink

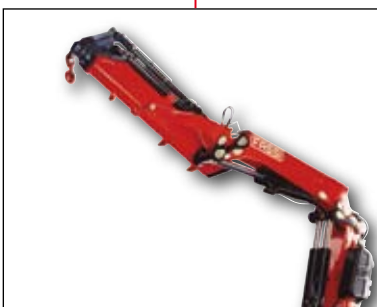
- IT**
- 1) Distributore idraulico digitale D900 flow sharing e radiocomando RCH/RCS Evolution
  - 2) Sistema di controllo elettronico FX800
  - 3) Rotazione continua su ralla con motoriduttore
  - 4) Valvola XF e rigenerativa
  - 5) Sistema MPES
  - 6) Bielle
  - 7) ProLink

- FR**
- 1) Distributeur hydraulique digital D900 "flow sharing" et radiocommande RCH/RCS Evolution
  - 2) Système électronique de contrôle FX800
  - 3) Rotation continue sur couronne dentée avec motoréducteur
  - 4) Valves XF et régénératrice d'huile
  - 5) MPES système
  - 6) Biellettes
  - 7) Système ProLink

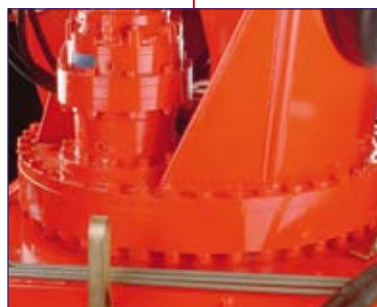
- ES**
- 1) Distribuidor hidráulico digital D900 "flow sharing" y radiocomando RCH/RCS Evolution
  - 2) Sistema electrónico de control FX800
  - 3) Rotación continua sobre corona con motorreductor
  - 4) Válvulas XF y regeneradora del aceite
  - 5) System MPES
  - 6) Bielas
  - 7) Sistema ProLink

- DE**
- 1) Digitaler Steuerblock D900 mit Flow sharing und der RCH/RCS-Funkfernsteuerung
  - 2) FX800-System, die elektronische Lastmomentbegrenzung
  - 3) Kugelgelagertes Endloschwenkwerk mit Getriebemotor
  - 4) Schnellgang- und XF-System-Ventile
  - 5) Multi-Power Ausschubsystem
  - 6) Kniehebelsystem
  - 7) PROLINK

- NL**
- 1) D900 "Flow sharing" digitaal aangestuurd hydraulisch ventielblok en RCH/RCS Evolutie radiografische afstandsbediening
  - 2) FX800 elektronisch beveiligingssysteem
  - 3) Endlos-Schwenkwerk Drehkranz met zwenkmotoren
  - 4) Retouroliehergebruik- en XF - veiligheidsventielen
  - 5) MPES-systeem
  - 6) Kniehevelsystemen
  - 7) ProLink



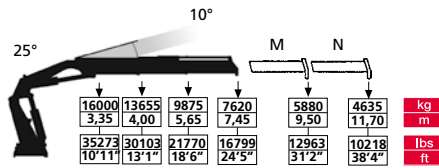
7



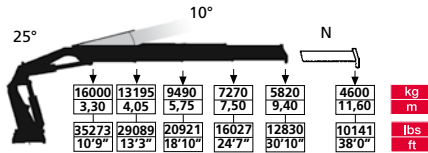
3



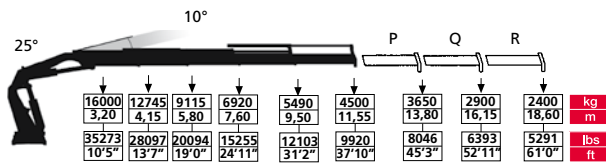
**F600A.22**



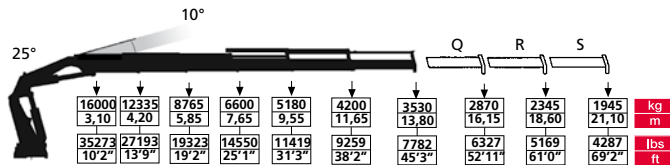
**F600A.23**



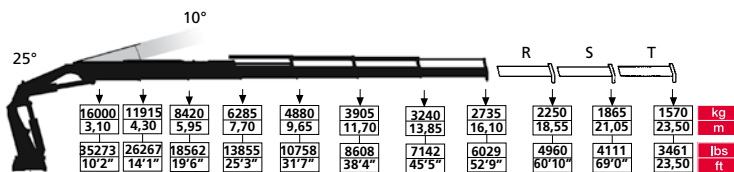
**F600A.24**



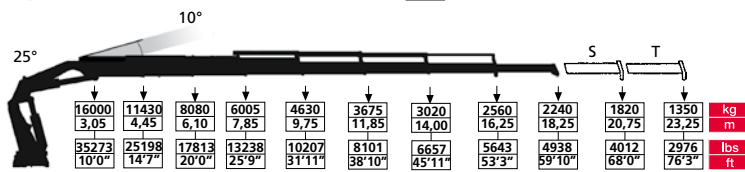
**F600A.25**



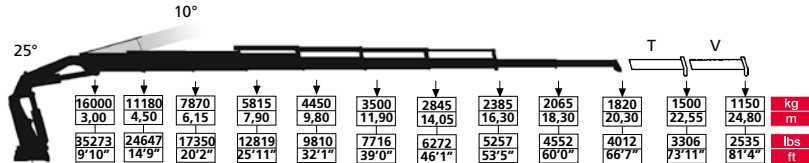
**F600A.26**



**F600A.27**

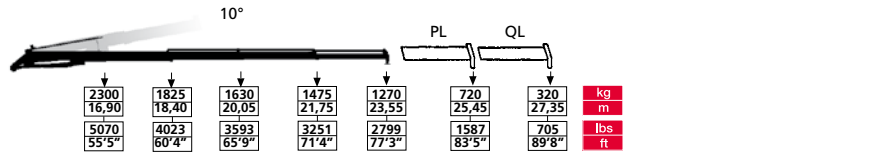


**F600A.28**

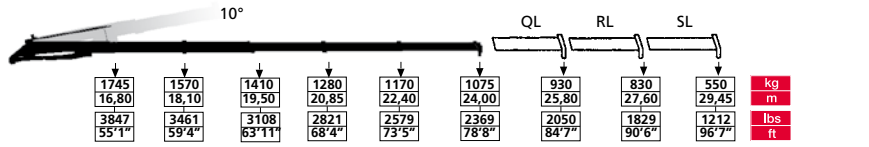


	tm	lbs.ft	m	ft	m	ft	°	kNm	lbs.ft	Mpa	psi	l/min	gal/min	l	gal	kg	lbs	mm	ft	mm	ft	mm	ft	mm	ft	mm	ft	mm	ft	mm	ft	mm	ft	mm	ft			
F600A.22	56,7	410111	7,70	25'4"	3,40	11'1"	360	CONTINUOUS	45,0	33199	31,5	4570	70-80	18-21	250	66	5135	11320	2505	8'3"	1520	5'0"	2465	8'1"														
F600A.23	54,7	395645	9,70	31'10"	5,35	17'6"	360	CONTINUOUS	45,0	33199	31,5	4570	70-80	18-21	250	66	5470	12070	2505	8'3"	1590	5'3"	2465	8'1"														
F600A.24	52,9	382626	11,85	38'11"	7,40	24'3"	360	CONTINUOUS	45,0	33199	31,5	4570	70-80	18-21	250	66	5800	12787	2505	8'3"	1590	5'3"	2465	8'1"														
F600A.25	51,8	374669	14,10	46'1"	9,60	31'5"	360	CONTINUOUS	45,0	33199	31,5	4570	70-80	18-21	250	66	6110	13470	2505	8'3"	1590	5'3"	2465	8'1"														
F600A.26	51,2	370330	16,40	53'9"	11,80	38'8"	360	CONTINUOUS	45,0	33199	31,5	4570	70-80	18-21	250	66	6400	14110	2505	8'3"	1590	5'3"	2465	8'1"														
F600A.27	50,8	367436	18,55	60'10"	13,80	45'3"	360	CONTINUOUS	45,0	33199	31,5	4570	70-80	18-21	250	66	6610	14573	2505	8'3"	1670	5'6"	2465	8'1"														
F600A.28	50,3	363820	20,60	67'6"	15,80	51'10"	360	CONTINUOUS	45,0	33199	31,5	4570	70-80	18-21	250	66	6790	14970	2505	8'3"	1670	5'6"	2465	8'1"														

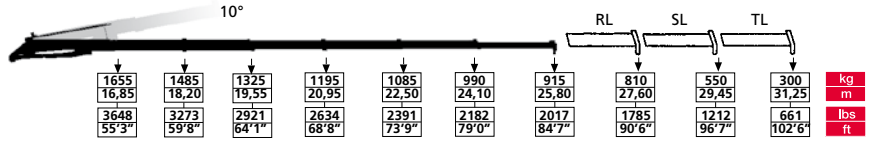
**F600A.25 L414**



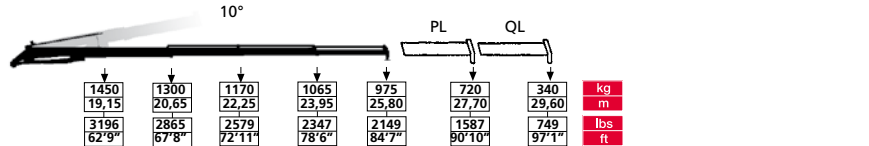
**F600A.25 L515**



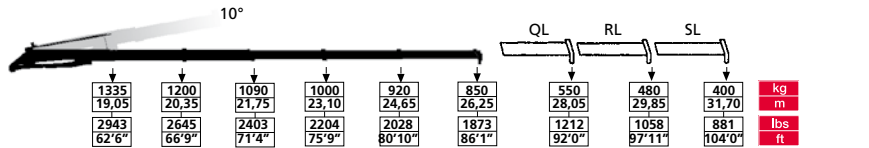
**F600A.25 L516**



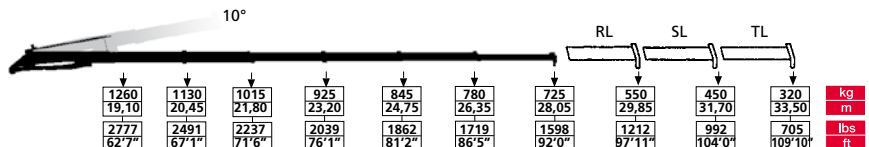
**F600A.26 L414**



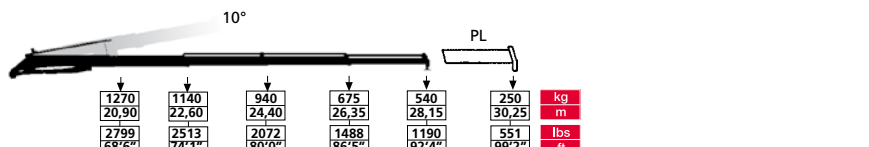
**F600A.26 L425**



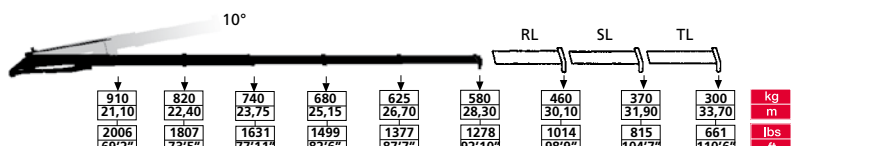
**F600A.26 L426**



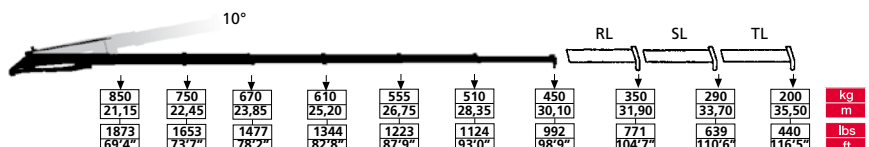
**F600A.27 L214**



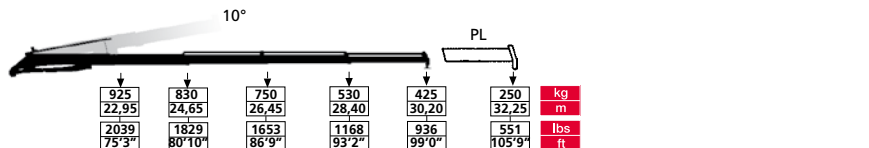
**F600A.27 L425**



**F600A.27 L426**

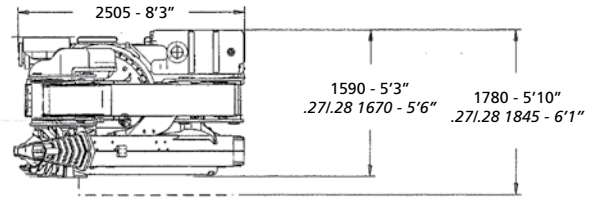
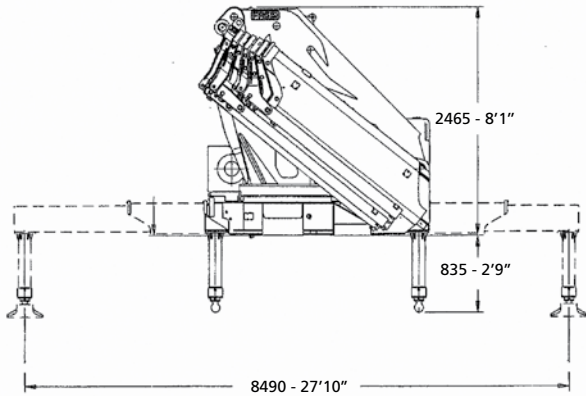


**F600A.28 L214**

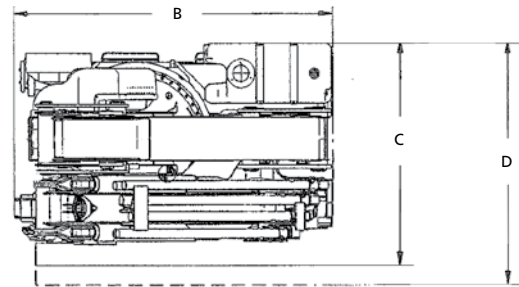
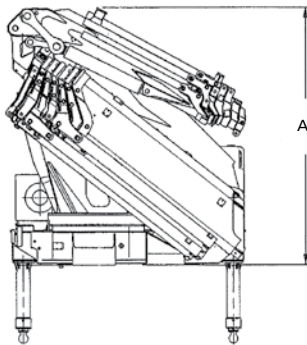


	tm	lbs.ft	m	ft	m	ft	°	kNm	lbs.ft	Mpa	psi	l/min	gal/min	oil	kg	lbs	mm	ft	mm	ft	mm	ft	
F600A.25 L414	51,8	374669	23,85	78'2"	16,20	53'1"	360 CONTINUOUS	45,0	33199	31,5	4570	70-80	18-21	250	66	7075	15597	2510	8'2"	1760	5'9"	2865	9'5"
F600A.25 L515	51,8	374669	24,30	79'8"	16,80	55'1"	360 CONTINUOUS	45,0	33199	31,5	4570	70-80	18-21	250	66	7410	16335	2535	8'4"	1760	5'9"	2750	9'0"
F600A.25 L516	51,8	374669	26,10	85'1"	18,50	60'8"	360 CONTINUOUS	45,0	33199	31,5	4570	70-80	18-21	250	66	7510	16555	2535	8'4"	1760	5'9"	2750	9'0"
F600A.26 L414	51,2	370330	26,05	85'6"	18,45	60'6"	360 CONTINUOUS	45,0	33199	31,5	4570	70-80	18-21	250	66	7350	16203	2555	8'5"	1760	5'9"	2865	9'5"
F600A.26 L425	51,2	370330	26,55	87'1"	19,05	62'6"	360 CONTINUOUS	45,0	33199	31,5	4570	70-80	18-21	250	66	7500	16533	2545	8'4"	1760	5'9"	2740	9'0"
F600A.26 L426	51,2	370330	28,35	93'0"	20,75	68'0"	360 CONTINUOUS	45,0	33199	31,5	4570	70-80	18-21	250	66	7600	16754	2545	8'4"	1760	5'9"	2740	9'0"
F600A.27 L214	50,8	367436	28,40	93'3"	21,10	69'2"	360 CONTINUOUS	45,0	33199	31,5	4570	70-80	18-21	250	66	7390	16292	2540	8'4"	1840	6'0"	2850	9'4"
F600A.27 L425	50,8	367436	28,55	93'9"	21,05	69'7"	360 CONTINUOUS	45,0	33199	31,5	4570	70-80	18-21	250	66	7710	16996	2535	8'4"	1840	6'0"	2795	9'2"
F600A.27 L426	50,8	367436	30,35	99'8"	22,75	74'7"	360 CONTINUOUS	45,0	33199	31,5	4570	70-80	18-21	250	66	7810	17217	2535	8'4"	1840	6'0"	2795	9'2"
F600A.28 L214	50,3	363820	30,45	99'11"	23,10	75'9"	360 CONTINUOUS	45,0	33199	31,5	4570	70-80	18-21	250	66	7583	16718	2540	8'4"	1840	6'0"	2840	9'4"

# F600A



# L SERIE



	A		B		C		D	
	mm	ft	mm	ft	mm	ft	mm	ft
.25 L414	2865	9'5"	2510	8'3"	1760	5'9"	1915	6'3"
.25 L515-L516	2750	9'0"	2535	8'4"	1760	5'9"	1915	6'3"
.26 L414	2865	9'5"	2555	8'5"	1760	5'9"	1915	6'3"
.26 L425-L426	2740	9'0"	2545	8'4"	1760	5'9"	1915	6'3"
.27 L425-L426	2795	9'2"	2535	8'4"	1840	6'0"	1995	6'6"
.27 L214	2850	9'4"	2540	8'4"	1840	6'0"	1995	6'6"
.28 L214	2840	9'4"	2540	8'4"	1840	6'0"	1995	6'6"

**L214** 650 kg / 1432 lbs  
**PL** 21 kg / 46 lbs

**L414** 850 kg / 1874 lbs  
**PL** 32 kg / 71 lbs  
**QL** 22 kg / 48 lbs

**L425** 1100 kg / 2425 lbs  
**QL** 55 kg / 121 lbs  
**RL** 36 kg / 79 lbs  
**SL** 25 kg / 55 lbs

**L426** 1200 kg / 2645 lbs  
**RL** 36 kg / 79 lbs  
**SL** 25 kg / 55 lbs  
**TL** 15 kg / 33 lbs

**L515** 1300 kg / 2865 lbs  
**QL** 55 kg / 121 lbs  
**RL** 36 kg / 79 lbs  
**SL** 25 kg / 55 lbs

**L516** 1400 kg / 3085 lbs  
**RL** 36 kg / 79 lbs  
**SL** 25 kg / 55 lbs  
**TL** 15 kg / 33 lbs



Data and descriptions are approximate and not binding - Dati e dimensioni sono forniti a titolo indicativo e non impegnativo - Toutes les données et descriptions sont fournies à titre indicatif, sans engagement Unverbindliche Angaben, Konstruktionsänderungen vorbehalten - Datos y descripciones todos a título indicativo y no imperativo - Specificaties zijn niet bindend, wijzigingen derhalve voorbehouden



FASSI GRU S.p.A. - Via Roma, 110 - 24021 Albino (Bergamo) ITALY  
Tel- +39 035 776400 - Fax +39 035 755020  
<http://www.fassigroup.com> E-mail: [fass@fassigroup.com](mailto:fass@fassigroup.com)

