

F560AXP



evolution
CONCEPT

english

italiano

français

deutsch

español

nederlands



c r a n e s w i t h o u t c o m p r o m i s e

FASSI

CRANES WITHOUT COMPROMISE

F560AXP



EVOLUTION SYSTEM

GB Evolution is the "TOP" range that includes the most advanced solutions in the field of cranes for trucks. At the heart of the system there are the electronic Evolution systems: the control unit, digital distributor, remote control, ADC combined by means of a CANBUS transmission protocol, and co-ordinated by the comprehensive management system IMC (Integral Machine Control). These systems, together with the excellent synergy between the double linkage system rods and the Prolink function, result in an exceptional crane performance in terms of speed and power, with the highest levels of safety. Control unit FX800 - Hydraulic distributor D900 - Command unit RCH - Dynamics control ADC

Design according to European Regulation EN12999*. Fatigue-tested in class H1B3.

IT Evolution è la gamma "TOP" che ingloba le soluzioni più avanzate nel settore delle gru per autocarro. Cuore dell'apparato sono i sistemi elettronici Evolution: unità di controllo, distributore digitale, radiocomando, ADC in combinazione tra di loro tramite protocollo di trasmissione CANBUS e coordinati dal sistema di gestione integrale IMC (Integral Machine Control). Questi sistemi, abbinati alla ottimale sinergia tra il doppio biellismo e la funzione Prolink consentono di ottenere dalla gru eccezionali prestazioni di velocità e potenza nella massima condizione di sicurezza. Unità di controllo FX800 - Distributore idraulico D900 - Unità di comando RCH - Controllo della dinamica ADC

Progettazione conforme alla Normativa Europea EN12999*. Classe di collaudo a fatica H1B3.

FR « Evolution » est la gamme "High Tech" englobant les solutions les plus avancées dans le secteur des grues pour camion. Le point vital du concept est constitué des systèmes électroniques « Evolution »: unité de contrôle, distributeur numérique, radiocommande, ADC se combinant grâce à un protocole d'émission CANBUS et sont coordonnés par le système de commande intégrale IMC (Integral Machine Control). Ces systèmes, en association avec l'excellente synergie existante entre la double biellette et la fonction Prolink permettent d'obtenir de la grue des performances de vitesse tout à fait exceptionnelles et une grande puissance dans des conditions de sécurité maximale. Unité de contrôle FX800 - Distributeur hydraulique D900 - Unité de commande RCH - Contrôle de la dynamique ADC

Etude de projet conforme à la norme européenne EN12999*. Essais en fatigue en classe H1B3.

ES Evolution es la gama "TOP" que reúne las soluciones más avanzadas en el sector de las grúas para camión. La base de la gama son los sistemas electrónicos Evolution: unidad de control, distribuidor digital, radiocontrol, sistema ADC combinados entre ellos mediante el protocolo de transmisión CANBUS y coordinados por el sistema de gestión integral IMC (Integral Machine Control). Estos sistemas, combinados con la óptima sinergia entre el sistema de doble biela y la función Prolink, permiten obtener de la grúa excepcionales prestaciones de velocidad y potencia en las máximas condiciones de seguridad. Unidad de control FX800 - Distribuidor hidráulico D900 - Unidad de control RCH - Control de la dinámica ADC

Proyecto según Normativa Europea EN12999*. Comprobación de fatiga en la clase H1B3.

DE Evolution ist die Top-Produktreihe, die die fortgeschrittensten Lösungen im Bereich LKW-Ladekrane in sich vereint. Herz der Gruppe sind die elektronischen Evolution Systeme: Kontrolleinheit, digitaler Steuerblock, Funkfernsteuerung, Bewegungskontrolle ADC, untereinander durch CANBUS-Übertragungsprotokoll verbunden und durch das Hauptverwaltungssystem IMC (Integral Machine Control) koordiniert. Diese Systeme, verbunden mit einer optimalen Synergie zwischen doppeltem Kniehebelsystem und der ProLink-Funktion, ermöglichen außergewöhnliche Geschwindigkeits- und Kraftleistungen des Krans bei maximaler Sicherheit. Kontrolleinheit FX800 - Digitaler Steuerblock D900 - Funkfernsteuerung RCH - Bewegungskontrolle ADC

Berechnungsnorm EN12999*. Ermüdungstest nach Klasse H1B3.

NL Evolutie is de topreeks, welke de meest vooruitstrevende oplossingen omvat in de autolaadkraan-sector. In de kern van het apparaat zijn er de elektronische Evolutie systemen: de controle-eenheid, het digitaal aangestuurde ventielblok, radiografische afstandsbesturing, ADC, welke via het transmissieprotocol CANBUS op elkaar zijn aangesloten en die door het integrale beheersysteem IMC (Integrale Machine Controle) gecoördineerd worden. Deze systemen en de optimale synergie tussen de dubbele kniehevelsystemen en de Prolink - functie resulteert in een exceptionele kraanprestaties voor wat betreft de snelheid en het hefvermogen betreft, met de hoogste veiligheidsniveaus. Controle-eenheid FX800 - Hydraulisch ventielblok D900 - Besturingseenheid RCH - Controle van de dynamica ADC

Het ontwerp van de kraan komt overeen me de Europese Norm EN12999*. Vermoeidheidscontrole in de klasse H1B3.

*For EC markets - Per mercati CE - Pour les marchés CE - Para los mercados CE - Für CE Märkte - Voor EG markten

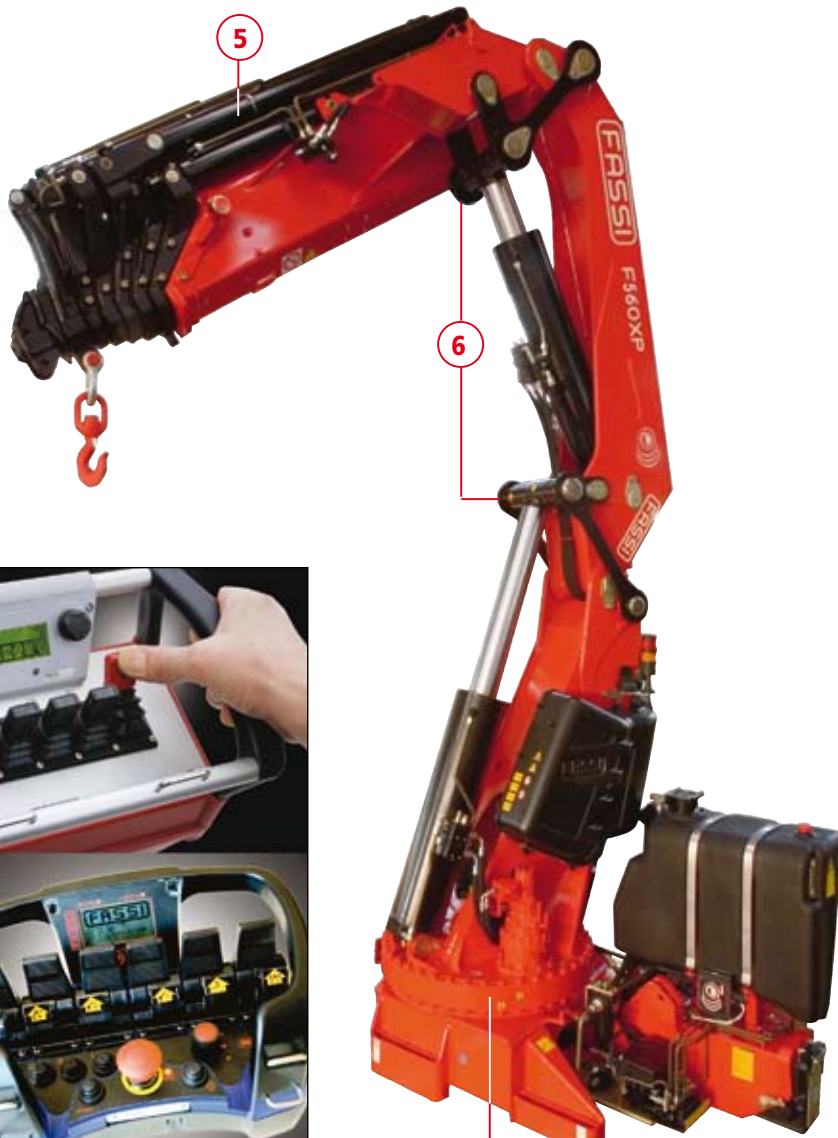
F560AXP



1



2



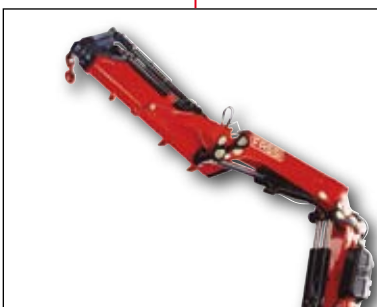
5

6

1



7

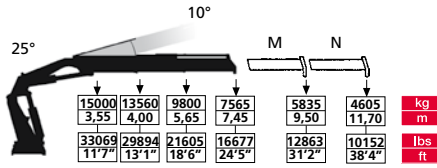


3

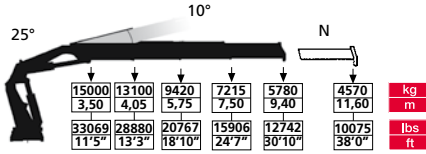


- GB**
- 1) D900 "Flow sharing" Digital hydraulic distributor and RCH/RCS Evolution remote control
 - 2) FX800 electronic control system
 - 3) Continuous rotation on a slew ring with motoreducer
 - 4) Recycling and XF valves
 - 5) MPES system
 - 6) Linkages
 - 7) ProLink
 - 8) XP system
- IT**
- 1) Distributore idraulico digitale D900 flow sharing e radiocomando RCH/RCS Evolution
 - 2) Sistema di controllo elettronico FX800
 - 3) Rotazione continua su ralla con motoriduttore
 - 4) Valvola XF e rigenerativa
 - 5) Sistema MPES
 - 6) Bielle
 - 7) ProLink
 - 8) Sistema XP
- FR**
- 1) Distributeur hydraulique digital D900 "flow sharing" et radiocommande RCH/RCS Evolution
 - 2) Système électronique de contrôle FX800
 - 3) Rotation continue sur couronne dentée avec motoréducteur
 - 4) Valves XF et régénératrice d'huile
 - 5) MPES système
 - 6) Biellettes
 - 7) Système ProLink
 - 8) XP système
- ES**
- 1) Distribuidor hidráulico digital D900 "flow sharing" y radiocomando RCH/RCS Evolution
 - 2) Sistema electrónico de control FX800
 - 3) Rotación continua sobre corona con motorreductor
 - 4) Válvulas XF y regeneradora del aceite
 - 5) System MPES
 - 6) Bielas
 - 7) Sistema ProLink
 - 8) Sistema XP
- DE**
- 1) Digitaler Steuerblock D900 mit Flow sharing und der RCH/RCS-Funkfernsteuerung
 - 2) FX800-System, die elektronische Lastmomentbegrenzung
 - 3) Kugelgelagertes Endloschwenkwerk mit Getriebemotor
 - 4) Schnellgang- und XF-System-Ventile
 - 5) Multi-Power Ausschubsystem
 - 6) Kniehebelsystem
 - 7) PROLINK
 - 8) System "XP"
- NL**
- 1) D900 "Flow sharing" digitaal aangestuurd hydraulisch ventielblok en RCH/RCS Evolutie radiografische afstandsbediening
 - 2) FX800 elektronisch beveiligingssysteem
 - 3) Endlos-Schwenkwerk Drehkranz met zwenkmotoren
 - 4) Retouroliehergebruik- en XF - veiligheidsventielen
 - 5) MPES-systeem
 - 6) Kniehevelsystemen
 - 7) ProLink
 - 8) XP-systeem

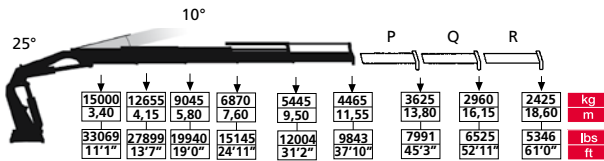
F560AXP.22



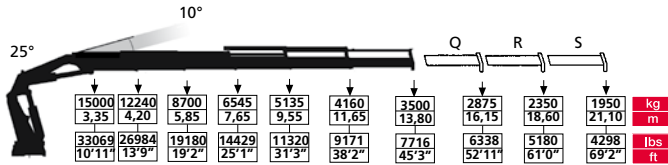
F560AXP.23



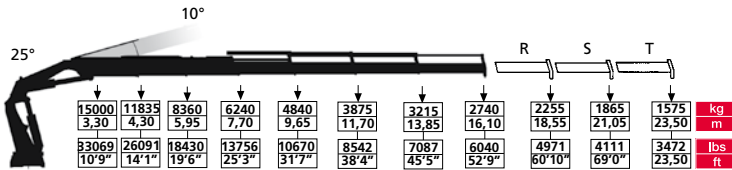
F560AXP.24



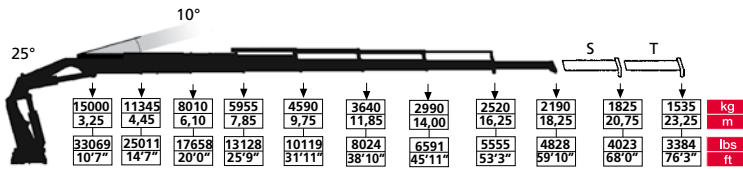
F560AXP.25



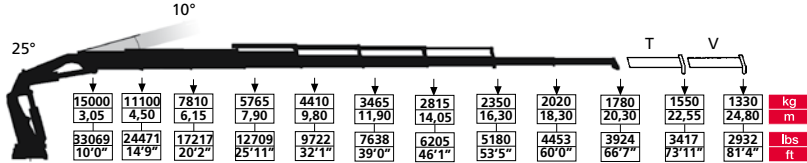
F560AXP.26



F560AXP.27

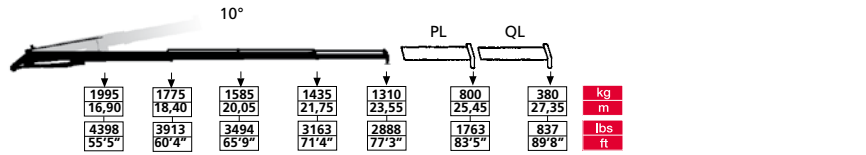


F560AXP.28

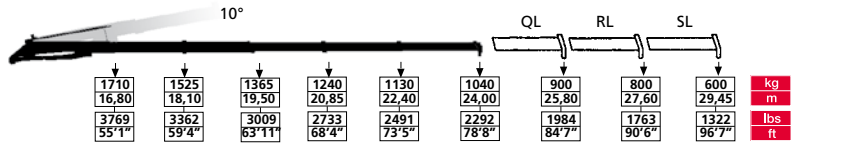


	tm	lbs.ft	m	ft	m	ft	°	kNm	lbs.ft	Mpa	psi	l/min	gal/min	l	gal	kg	lbs	mm	ft	mm	ft	mm	ft	mm	ft	mm	ft	mm	ft	mm	ft	mm	ft	mm	ft			
F560AXP.22	56,3	407218	7,70	25'4"	3,40	11'1"	360	CONTINUOUS	45,0	33199	34,0	4930	70-80	18-21	250	66	5000	11023	2505	8'3"	1520	5'0"	2465	8'1"														
F560AXP.23	54,3	392752	9,70	31'10"	5,35	17'6"	360	CONTINUOUS	45,0	33199	34,0	4930	70-80	18-21	250	66	5335	11762	2505	8'3"	1590	5'3"	2465	8'1"														
F560AXP.24	52,5	379732	11,85	38'11"	7,40	24'3"	360	CONTINUOUS	45,0	33199	34,0	4930	70-80	18-21	250	66	5665	12490	2505	8'3"	1590	5'3"	2465	8'1"														
F560AXP.25	51,4	371776	14,10	46'1"	9,60	31'5"	360	CONTINUOUS	45,0	33199	34,0	4930	70-80	18-21	250	66	5975	13172	2505	8'3"	1590	5'3"	2465	8'1"														
F560AXP.26	50,8	367436	16,40	53'9"	11,80	38'8"	360	CONTINUOUS	45,0	33199	34,0	4930	70-80	18-21	250	66	6265	13812	2505	8'3"	1590	5'3"	2465	8'1"														
F560AXP.27	50,4	364543	18,55	60'10"	13,80	45'3"	360	CONTINUOUS	45,0	33199	34,0	4930	70-80	18-21	250	66	6475	14275	2505	8'3"	1670	5'6"	2465	8'1"														
F560AXP.28	49,9	360927	20,60	67'6"	15,80	51'10"	360	CONTINUOUS	45,0	33199	34,0	4930	70-80	18-21	250	66	6655	14672	2505	8'3"	1670	5'6"	2465	8'1"														

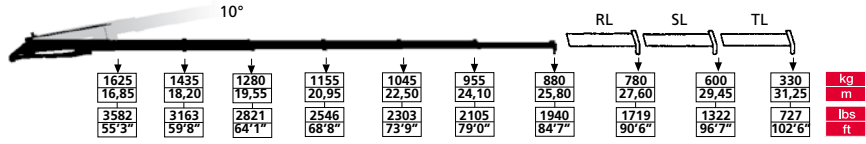
F560AXP.25 L414



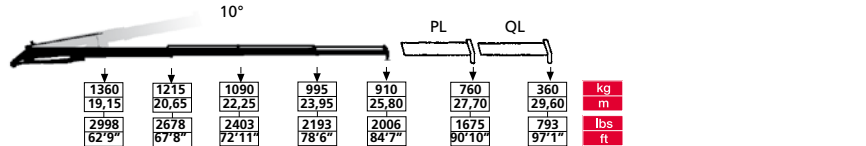
F560AXP.25 L515



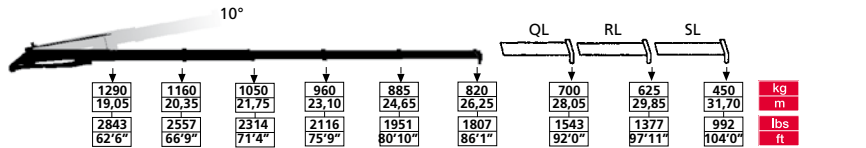
F560AXP.25 L516



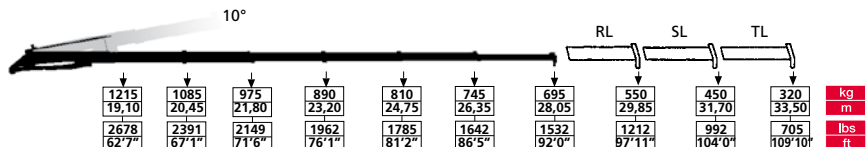
F560AXP.26 L414



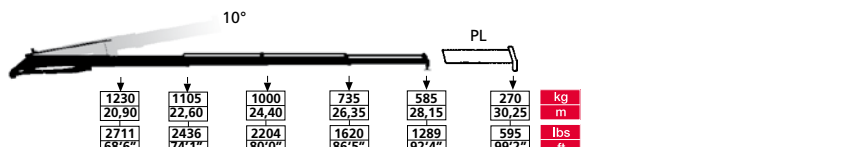
F560AXP.26 L425



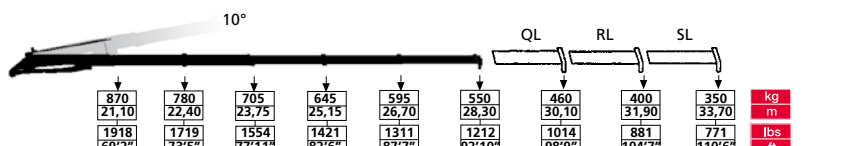
F560AXP.26 L426



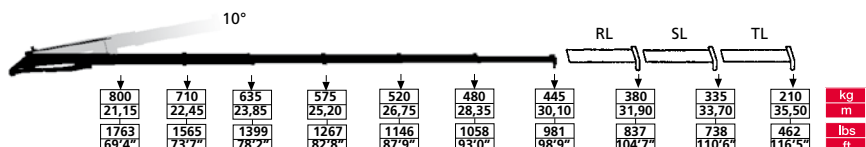
F560AXP.27 L214



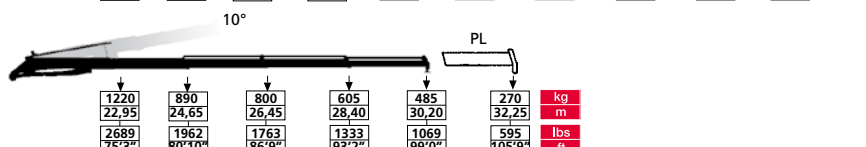
F560AXP.27 L425



F560AXP.27 L426

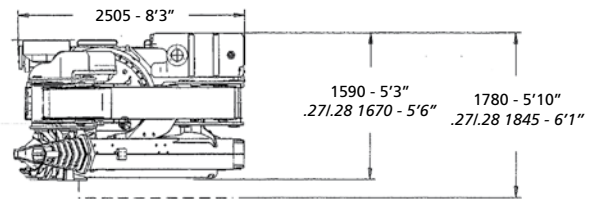
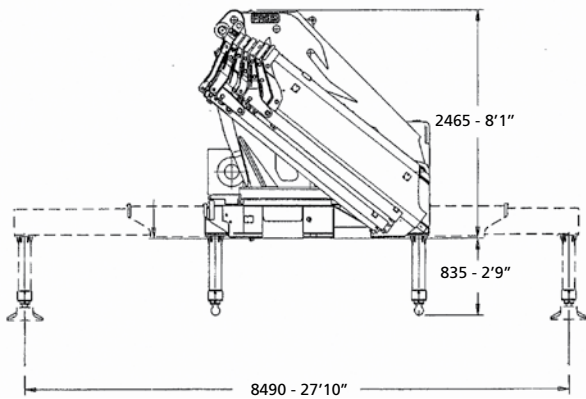


F560AXP.28 L214

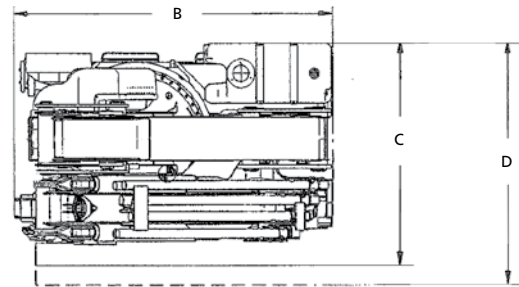
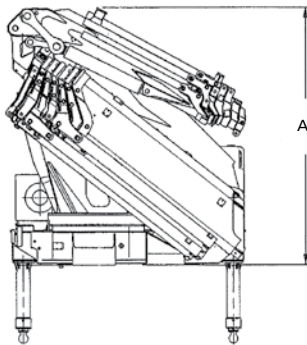


	tm	lbs.ft	m	ft	m	ft	°	kNm	lbs.ft	Mpa	psi	l/min	gal/min	oil	kg	lbs	mm	ft	mm	ft	mm	ft	
F560AXP.25 L414	51,4	371776	23,85	78'2"	16,20	53'1"	360 CONTINUOUS	45,0	33199	34,0	4930	70-80	18-21	250	66	6940	15300	2510	8'2"	1760	5'9"	2865	9'5"
F560AXP.25 L515	51,4	371776	24,30	79'8"	16,80	55'1"	360 CONTINUOUS	45,0	33199	34,0	4930	70-80	18-21	250	66	7275	16038	2535	8'4"	1760	5'9"	2750	9'0"
F560AXP.25 L516	51,4	371776	26,10	85'1"	18,50	60'8"	360 CONTINUOUS	45,0	33199	34,0	4930	70-80	18-21	250	66	7375	16258	2535	8'4"	1760	5'9"	2750	9'0"
F560AXP.26 L414	50,8	367436	26,05	85'6"	18,45	60'6"	360 CONTINUOUS	45,0	33199	34,0	4930	70-80	18-21	250	66	7215	15905	2555	8'5"	1760	5'9"	2865	9'5"
F560AXP.26 L425	50,8	367436	26,55	87'1"	19,05	62'6"	360 CONTINUOUS	45,0	33199	34,0	4930	70-80	18-21	250	66	7365	16236	2545	8'4"	1760	5'9"	2740	9'0"
F560AXP.26 L426	50,8	367436	28,35	93'0"	20,75	68'0"	360 CONTINUOUS	45,0	33199	34,0	4930	70-80	18-21	250	66	7465	16456	2545	8'4"	1760	5'9"	2740	9'0"
F560AXP.27 L214	50,4	364543	28,40	93'3"	21,10	69'2"	360 CONTINUOUS	45,0	33199	34,0	4930	70-80	18-21	250	66	7255	15995	2540	8'4"	1840	6'0"	2850	9'4"
F560AXP.27 L425	50,4	364543	28,55	93'9"	21,05	69'9"	360 CONTINUOUS	45,0	33199	34,0	4930	70-80	18-21	250	66	7575	16700	2535	8'4"	1840	6'0"	2795	9'2"
F560AXP.27 L426	50,4	364543	30,35	99'8"	22,75	74'7"	360 CONTINUOUS	45,0	33199	34,0	4930	70-80	18-21	250	66	7675	16920	2535	8'4"	1840	6'0"	2795	9'2"
F560AXP.28 L214	49,9	360927	30,45	99'11"	23,10	75'9"	360 CONTINUOUS	45,0	33199	34,0	4930	70-80	18-21	250	66	7448	16420	2540	8'4"	1840	6'0"	2840	9'4"

F560AXP



L SERIE



	A		B		C		D	
	mm	ft	mm	ft	mm	ft	mm	ft
.25 L414	2865	9'5"	2510	8'3"	1760	5'9"	1915	6'3"
.25 L515-L516	2750	9'0"	2535	8'4"	1760	5'9"	1915	6'3"
.26 L414	2865	9'5"	2555	8'5"	1760	5'9"	1915	6'3"
.26 L425-L426	2740	9'0"	2545	8'4"	1760	5'9"	1915	6'3"
.27 L425-L426	2795	9'2"	2535	8'4"	1840	6'0"	1995	6'6"
.27 L214	2850	9'4"	2540	8'4"	1840	6'0"	1995	6'6"
.28 L214	2840	9'4"	2540	8'4"	1840	6'0"	1995	6'6"

L214 650 kg / 1432 lbs	L414 850 kg / 1874 lbs	L425 1100 kg / 2425 lbs
PL 21 kg / 46 lbs	PL 32 kg / 71 lbs	QL 55 kg / 121 lbs
	QL 22 kg / 48 lbs	RL 36 kg / 79 lbs
		SL 25 kg / 55 lbs

L426 1200 kg / 2645 lbs	L515 1300 kg / 2865 lbs	L516 1400 kg / 3085 lbs
RL 36 kg / 79 lbs	QL 55 kg / 121 lbs	RL 36 kg / 79 lbs
SL 25 kg / 55 lbs	RL 36 kg / 79 lbs	SL 25 kg / 55 lbs
TL 15 kg / 33 lbs	SL 25 kg / 55 lbs	TL 15 kg / 33 lbs



Data and descriptions are approximate and not binding - Dati e dimensioni sono forniti a titolo indicativo e non impegnativo - Toutes les données et descriptions sont fournies à titre indicatif, sans engagement Unverbindliche Angaben, Konstruktionsänderungen vorbehalten - Datos y descripciones todos a título indicativo y no imperativo - Specificaties zijn niet bindend, wijzigingen derhalve voorbehouden



FASSI GRU S.p.A. - Via Roma, 110 - 24021 Albino (Bergamo) ITALY
 Tel- +39 035 776400 - Fax +39 035 755020
<http://www.fassigroup.com> E-mail: fassif@fassigroup.com

